

# Report

## Cabinet

---



### Part 1

Date: 17 January 2018

**Subject** Education/ Pupil Performance Data 2016/17 Key Stage 4 and Key Stage 5

**Purpose** To inform Cabinet Members of pupil performance at Key Stage 4 and Key Stage 5

**Author** Chief Education Officer

**Ward** General

**Summary** The report provides combined pupil performance data for Newport schools at Key Stage 4 and Key Stage 5. This year it is not possible to meaningfully compare regional or local authority results to previous years. This is due to significant revisions to examinations that means they focus in part on different skill sets and knowledge than in previous years.

**Proposal** Cabinet are asked:

1. To acknowledge the position regarding pupil performance and progress made.
2. To consider any issues arising that the Cabinet may wish to draw to the attention of the Chief Education Officer.

**Action by** Chief Education Officer

**Timetable** Immediate

This report was prepared after consultation with:

- Head of Law and Regulation – Monitoring Officer
- Head of Finance – Chief Financial Officer
- Head of People and Business Change
- Strategic Director (People)
- Cabinet Member for Education and Young People

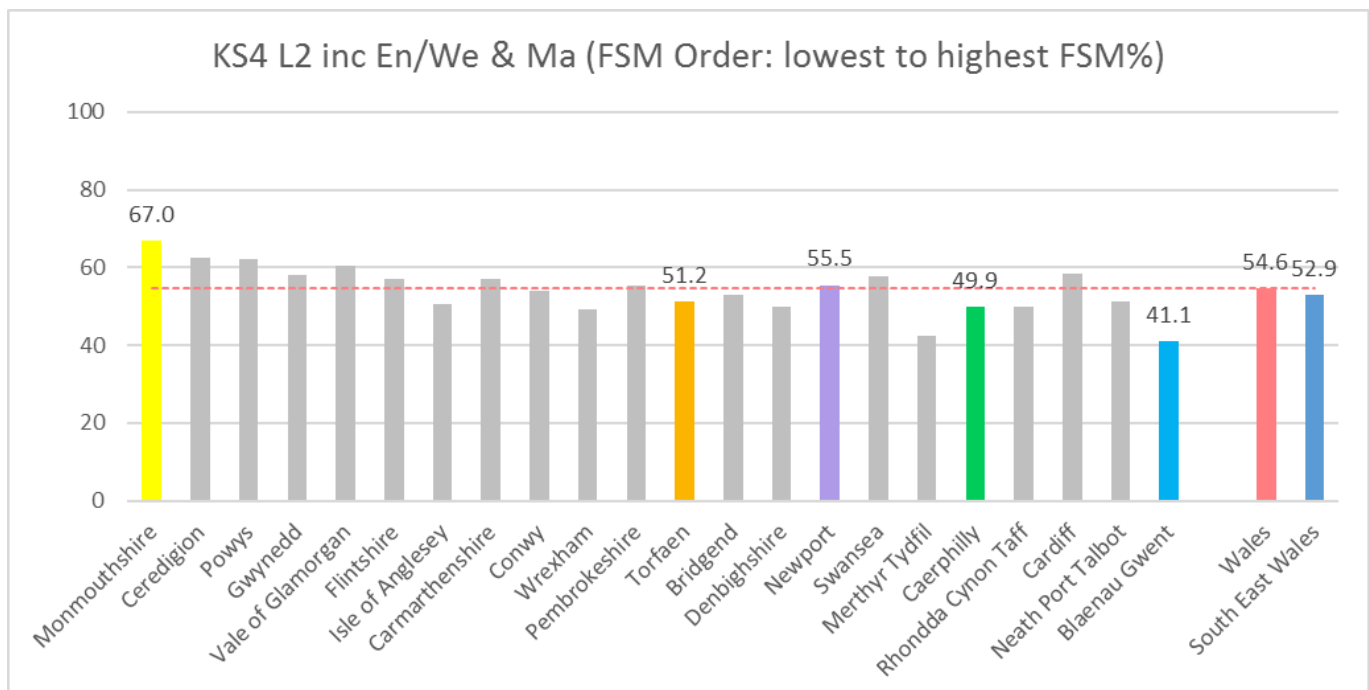
## Background

At Key Stage 4, the following key performance measures are used to evaluate and compare the full range of achievement within and across local authorities:

- Level 2 threshold including English or Welsh first language and best of mathematics/numeracy (L2+)
- Level 2 threshold (L2)
- Level 1 threshold (L1)
- Core Subject Indicator (CSI)
- Capped Points 9 (CP9)
- A\*-C in English or Welsh first language GCSE
- A\*-C in mathematics/numeracy GCSE
- Level 2 qualification (equivalent to GCSE A\*-C) in science

This year it is not possible to meaningfully compare regional or local authority results to previous years. This is due to significant revisions to examinations that means they focus in part on different skill sets and knowledge than in previous years. Despite this the region is already working with schools to track individual pupil performance over time. This will mean that school leaders and our local authorities are well positioned to gauge where schools are progressing well or where they may need additional support. Communications from the examination awarding body and the regulator throughout this academic year indicated that this variability was to be expected, and this is reflected in regional results. As in previous years we have been talking to post-16 providers to ensure that no learner is disadvantaged and that they are provided with appropriate pathways following results.

The proportion of pupils achieving the Level 2 threshold inclusive of English/Welsh first language and mathematics has declined from 57.3% in 2016 to 55.5% in 2016, a decrease of 1.8pp. Newport LA was ranked 10th in 2017, an improvement on 15th in 2016. This performance is above expectation (PLASC 2017 FSM rank = 15th).



## Performance against Targets

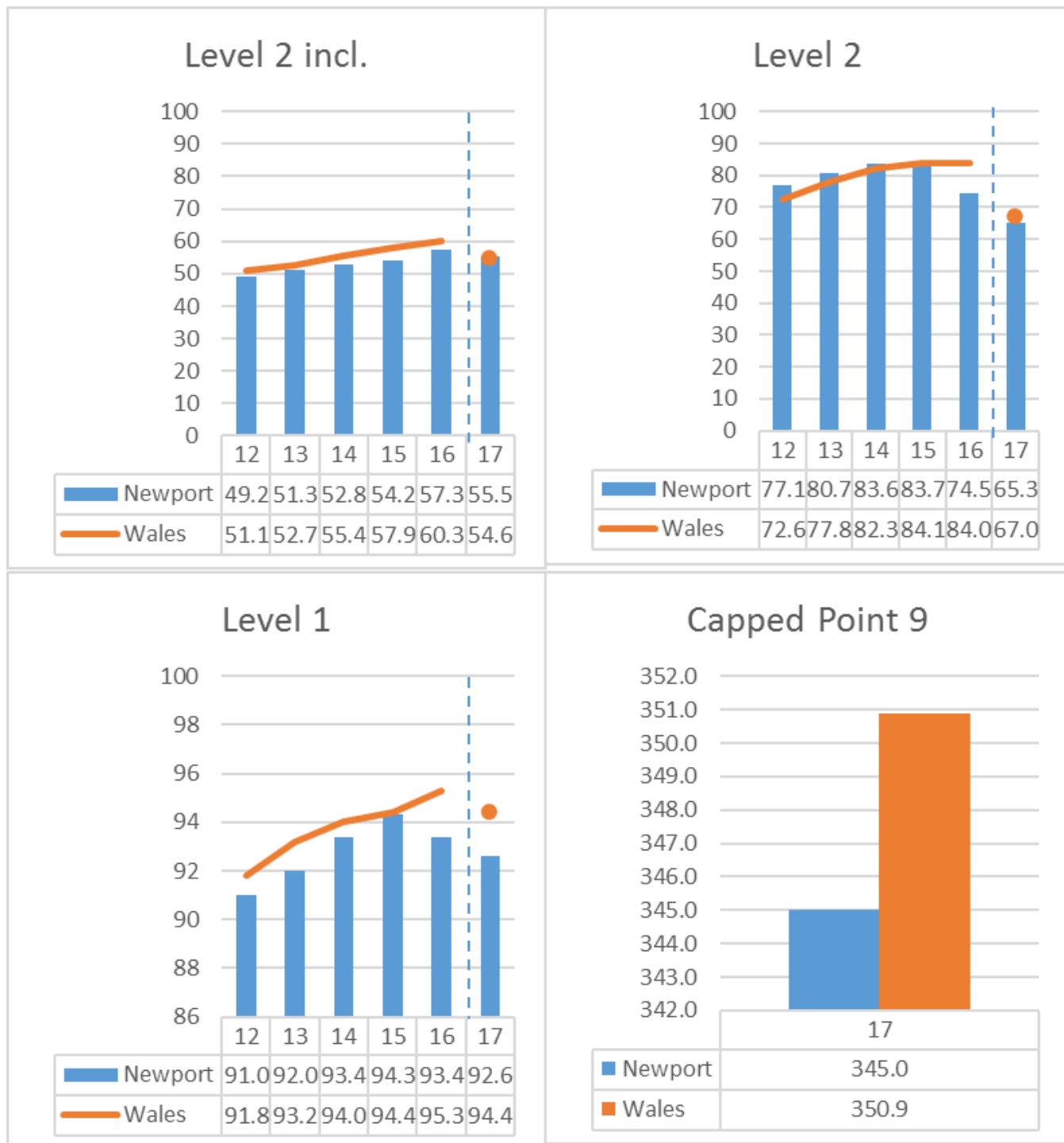
When comparing results against June predictions, out of the 8 secondary schools in the authority, two schools performed above prediction, one reported performance more than 10 pp below June prediction. Five schools reported performance within 5 pp of their June estimates (62.5%).

## FSM L2 inclusive threshold

L2 inclusive threshold performance of FSM pupils in 2017 has declined by 7.8 pp to 28.6%. In comparison, the national FSM average declined by 7 pp from 35.6% to 28.6%. The FSM/non FSM gap has increased by 6 pp to 33.5 pp.

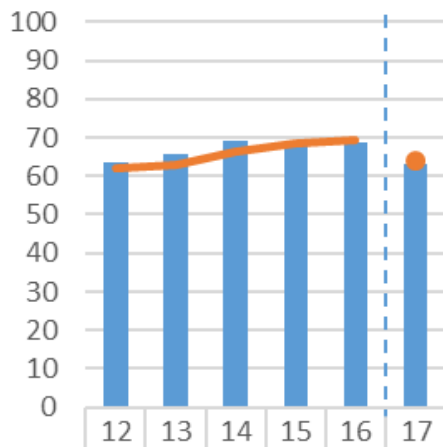
There were 3 schools with improved FSM performance this year.

There were decreases at the L1, L2 & L2 inc thresholds, and all measures remain below the Wales average, reflecting the slightly higher FSM percentage in Newport compared to the national.



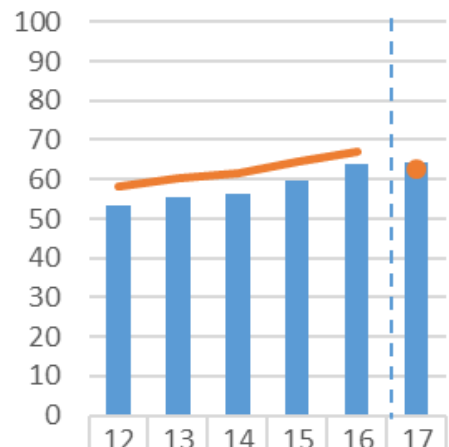
There were increases in mathematics, science and 5A\*/As, and performance is above the Wales average in maths.

### English (A\*-C)



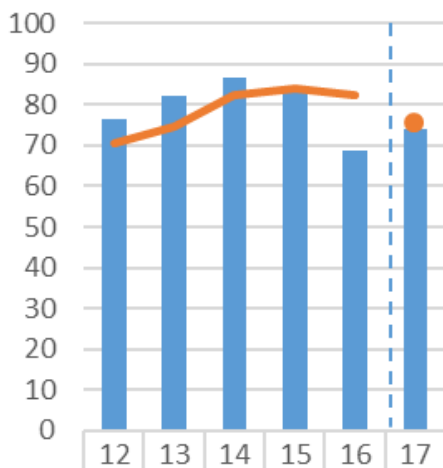
<span style="color: blue;">■</span> Newport	63.4	65.5	69.2	67.7	68.5	62.9
<span style="color: orange;">—</span> Wales	62.2	62.9	66.2	68.6	69.3	63.7

### Mathematics (A\*-C)



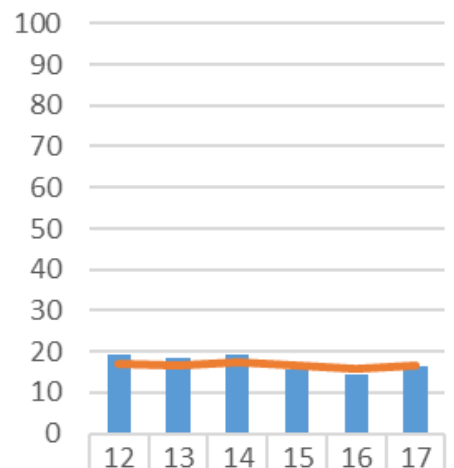
<span style="color: blue;">■</span> Newport	53.4	55.5	56.4	59.6	63.7	64.3
<span style="color: orange;">—</span> Wales	58.4	60.3	61.7	64.4	66.9	62.5

### Science (A\*-C)



<span style="color: blue;">■</span> Newport	76.3	82.3	86.5	83.0	68.7	74.2
<span style="color: orange;">—</span> Wales	70.6	74.8	82.3	84.0	82.4	75.6

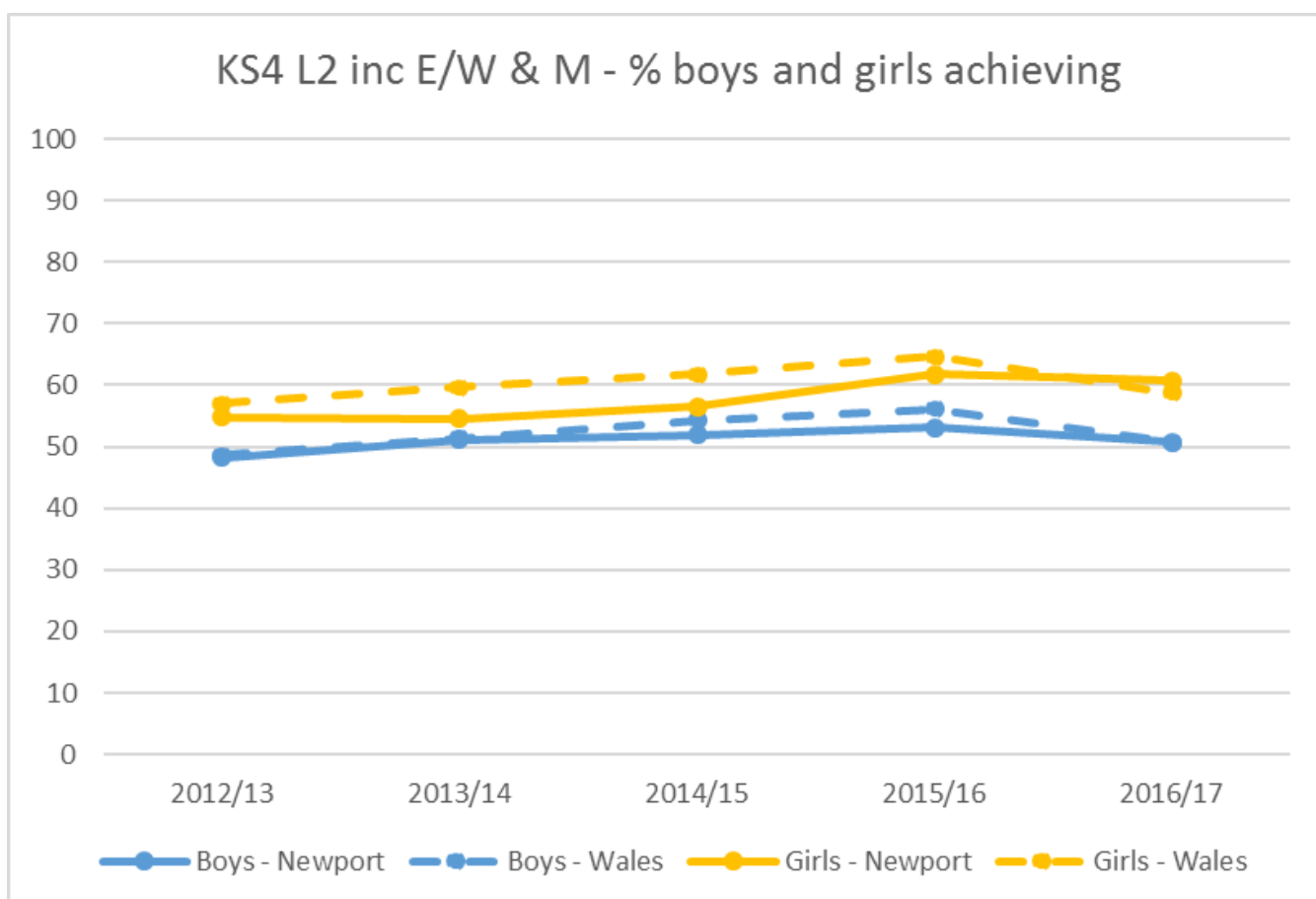
### 5 A\*/A



<span style="color: blue;">■</span> Newport	19.3	18.4	19.1	15.8	14.5	16.3
<span style="color: orange;">—</span> Wales	17.1	16.7	17.3	16.5	15.9	16.7

## Gender Differences

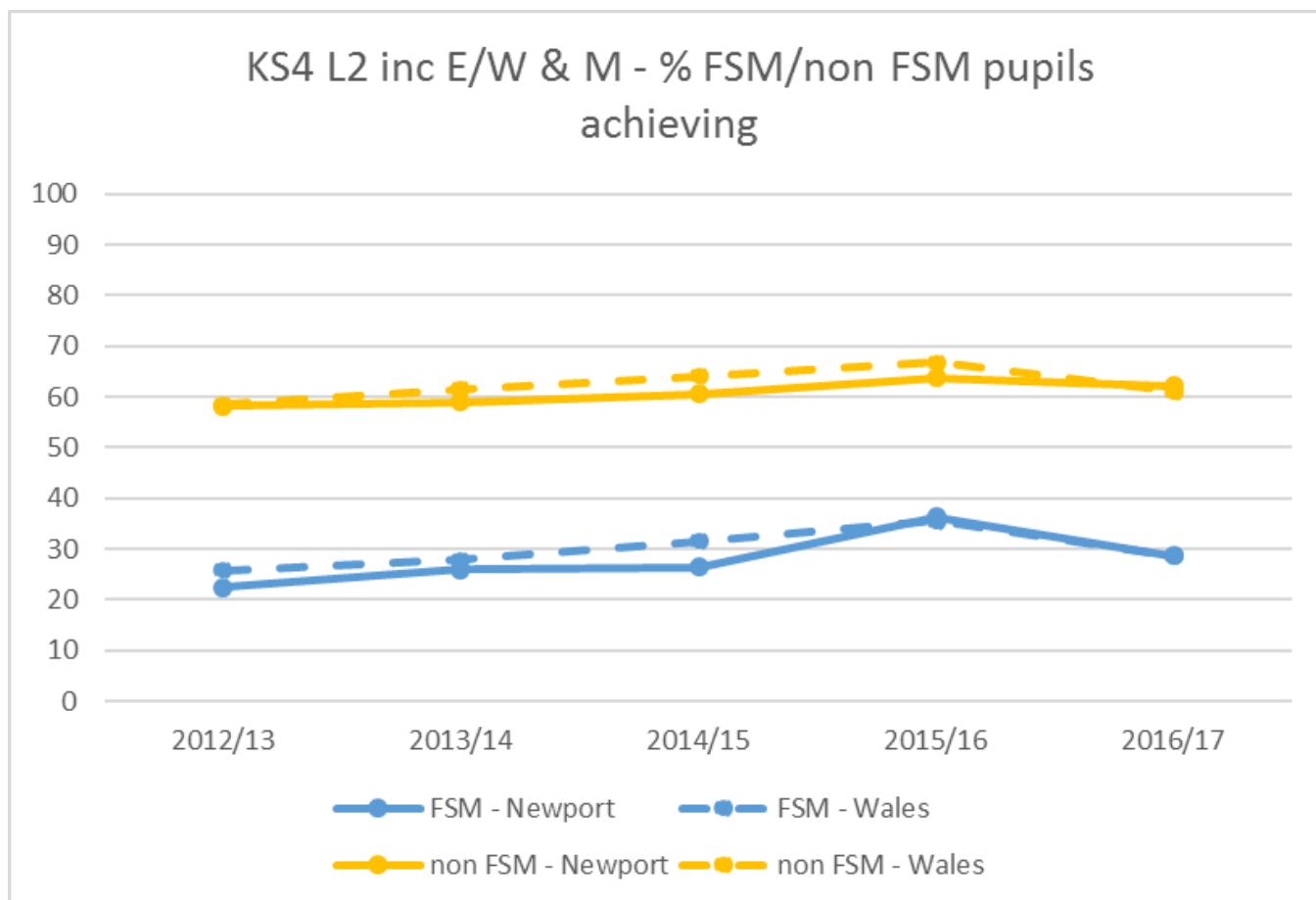
The gender gap in Newport has fluctuated over the past 5 years, and for the Level 2 threshold inclusive of English/Welsh first language and mathematics is now 10 percentage points, an increase from 6.5 percentage points in 2013, and is now above the Wales average of 8.1 percentage points.



KS4 L2 inc E/W & M (% achieving)	2012/13	2013/14	2014/15	2015/16	2016/17
Boys - Newport	48.3	51.1	51.9	53.1	50.7
Boys - Wales	48.7	51.4	54.3	56.1	50.7
Girls - Newport	54.8	54.5	56.5	61.8	60.7
Girls - Wales	57.0	59.7	61.8	64.7	58.8
Difference (boys% - girls%) - Newport	-6.5	-3.4	-4.6	-8.7	-10.0
Difference (boys% - girls%) - Wales	-8.3	-8.3	-7.5	-8.6	-8.1

## Performance of eFSM / non-eFSM Pupils

The FSM/non FSM gap widened in 2017 for the Level 2 threshold inclusive of English/Welsh first language and mathematics from a 35.7 percentage points gap in 2013 to a 33.5 points gap in 2017 (although it widened from 2016), and is now above the Wales average of 32.4 points. This gap has widened due to the faster rate of decline of FSM pupil performance relative to non FSM pupil performance.



KS4 L2 inc E/W & M (% achieving)	2012/13	2013/14	2014/15	2015/16	2016/17
FSM - Newport	22.5	25.9	26.4	36.3	28.6
FSM - Wales	25.8	27.8	31.6	35.6	28.6
non FSM - Newport	58.2	58.9	60.6	63.8	62.1
non FSM - Wales	58.5	61.6	64.1	66.8	61.0
Difference (FSM% -non FSM%) - Newport	-35.7	-33.0	-34.2	-27.5	-33.5
Difference (FSM% -non FSM%) - Wales	-32.7	-33.8	-32.5	-31.2	-32.4

## LA Rankings

Newport's performance improved for all indicators except L1, which remained 21<sup>st</sup>.

	L2 inclusive	L2	L1	Capped Point Score	English	Maths	Science
<b>2017</b>	10	13	21	13	12	8	12
<b>2016</b>	15	20	21	21	15	15	21

L2 inc Eng/Wel & Mat		Level 2 Threshold		Level 1 Threshold		Capped Points 9 Score	
Monmouthshire	67.0	Ceredigion	78.5	Carmarthenshire	97.7	Ceredigion	380.1
Ceredigion	62.4	Monmouthshire	77.3	Gwynedd	97.3	Vale of Glamorgan	374.3
Powys	62.2	Powys	74.3	Powys	96.4	Monmouthshire	368.1
Vale of Glamorgan	60.4	Vale of Glamorgan	73.8	Conwy	96.0	Powys	365.8
Cardiff	58.5	Carmarthenshire	72.6	Ceredigion	95.9	Gwynedd	365.8
Gwynedd	58.1	Gwynedd	70.0	Vale of Glamorgan	95.9	Swansea	361.1
Swansea	57.8	Cardiff	69.9	Swansea	95.4	Carmarthenshire	360.8
Carmarthenshire	57.2	Swansea	69.7	Isle of Anglesey	95.4	Cardiff	360.7
Flintshire	57.0	Bridgend	67.9	Merthyr Tydfil	95.0	Bridgend	356.9
Newport	55.5	Wales	67.0	Rhondda Cynon Taff	94.7	Conwy	351.0
Pembrokeshire	55.3	Conwy	66.8	Pembrokeshire	94.7	Wales	350.9
Wales	54.6	Pembrokeshire	66.0	Flintshire	94.6	Flintshire	346.8
Conwy	53.8	Flintshire	65.8	Wales	94.4	Rhondda Cynon Taff	346.1
Bridgend	53.0	Newport	65.3	Bridgend	94.1	Newport	345.0
South East Wales	52.9	Neath Port Talbot	65.2	Monmouthshire	94.1	Torfaen	341.9
Neath Port Talbot	51.4	Isle of Anglesey	64.5	Caerphilly	94.0	South East Wales	341.9
Torfaen	51.2	South East Wales	63.7	Wrexham	93.8	Pembrokeshire	340.4
Isle of Anglesey	50.5	Denbighshire	63.6	Neath Port Talbot	93.5	Neath Port Talbot	339.5
Denbighshire	50.0	Rhondda Cynon Taff	63.2	South East Wales	93.3	Caerphilly	336.2
Caerphilly	49.9	Torfaen	61.6	Cardiff	93.2	Isle of Anglesey	335.9
Rhondda Cynon Taff	49.8	Wrexham	60.4	Blaenau Gwent	92.8	Wrexham	335.6
Wrexham	49.3	Caerphilly	59.9	Torfaen	92.8	Denbighshire	333.9
Merthyr Tydfil	42.4	Blaenau Gwent	59.2	Newport	92.6	Merthyr Tydfil	326.8
Blaenau Gwent	41.1	Merthyr Tydfil	58.8	Denbighshire	90.2	Blaenau Gwent	320.4

A* - C English Language		A* - C Welsh 1st language		A* - C best of maths		L2 science	
Monmouthshire	74.6	Swansea	86.4	Monmouthshire	74.8	Vale of Glamorgan	90.0
Powys	73.2	Bridgend	83.8	Ceredigion	69.8	Ceredigion	86.9
Ceredigion	69.2	Cardiff	83.3	Powys	68.1	Cardiff	81.4
Vale of Glamorgan	69.2	Pembrokeshire	81.3	Flintshire	67.5	Flintshire	80.0
Carmarthenshire	68.6	Vale of Glamorgan	79.3	Vale of Glamorgan	67.3	Carmarthenshire	78.9
Swansea	66.7	Denbighshire	79.3	Cardiff	65.5	Rhondda Cynon Taff	78.6
Flintshire	66.5	Ceredigion	78.8	Swansea	65.0	Conwy	78.3
Cardiff	66.2	Rhondda Cynon Taff	74.7	Newport	64.3	Monmouthshire	78.1
Pembrokeshire	65.6	Wales	74.2	Carmarthenshire	64.2	Powys	76.9
Conwy	64.0	Torfaen	73.6	Gwynedd	62.9	Bridgend	75.7
Wales	63.7	Carmarthenshire	72.5	Pembrokeshire	62.7	Wales	75.6
Gwynedd	63.5	Neath Port Talbot	72.1	Wales	62.5	Swansea	75.6
Newport	62.9	Gwynedd	72.1	Conwy	62.2	Newport	74.2
Neath Port Talbot	62.7	Flintshire	71.9	South East Wales	61.5	Wrexham	73.6
South East Wales	62.3	Powys	71.1	Bridgend	61.2	Torfaen	72.8
Torfaen	61.8	Conwy	69.9	Torfaen	60.1	Gwynedd	72.8
Bridgend	61.5	South East Wales	68.9	Neath Port Talbot	59.4	Isle of Anglesey	72.3
Isle of Anglesey	60.0	Caerphilly	66.2	Rhondda Cynon Taff	59.3	South East Wales	72.0
Caerphilly	59.9	Isle of Anglesey	65.0	Denbighshire	58.4	Merthyr Tydfil	69.7
Denbighshire	59.2	Wrexham	60.2	Caerphilly	58.3	Caerphilly	69.5
Wrexham	57.9	Monmouthshire	-	Isle of Anglesey	58.0	Neath Port Talbot	67.1
Rhondda Cynon Taff	56.4	Newport	-	Wrexham	56.2	Denbighshire	66.8
Merthyr Tydfil	54.9	Blaenau Gwent	-	Blaenau Gwent	50.2	Blaenau Gwent	65.1
Blaenau Gwent	54.7	Merthyr Tydfil	-	Merthyr Tydfil	49.4	Pembrokeshire	64.9

## Individual Schools

The table below presents the individual schools' data in order of Free School Meal eligibility (lowest to highest).

		% L2 E,W+M			% L2			% L1			Capped Point 9	
School	FSM	2015	2016	2017	2015	2016	2017	2015	2016	2017		2017
Caerleon	5.2	67.9	68.5	81.3	81.9	83.8	85.8	98.3	97.9	99.6		401.9
Bassaleg	6.4	65.6	73.1	73.0	92.1	93.0	83.1	98.8	99.2	96.4		397.3
St Joseph's	11.7	73.0	73.0	68.3	92.6	81.0	81.0	100.0	98.7	99.5		386.7
St Julian's	19.3	46.6	51.0	48.6	78.5	59.4	56.4	90.4	96.4	91.8		321.8
Newport High	20.5	43.5	44.8	40.1	83.7	67.2	54.5	93.5	95.3	94.7		314.6
The John Frost School	27.3	41.2	52.1	48.1	80.7	79.3	59.9	95.7	96.3	92.6		333.7
Llswerry High	31.3	41.3	53.7	44.6	84.5	77.4	54.6	91.0	94.9	91.5		315.1
Llanwern High	33.3	45.7	44.5	26.1	81.9	69.3	37.0	93.1	85.4	89.9		298.4
Newport	18.6	54.2	57.3	55.5	83.7	67.2	65.3	94.3	93.4	92.6		345.0
Wales	17.8	57.9	60.3	54.6	84.1	84.0	67.0	94.4	95.3	94.4		350.9

		English (A*-C)			Maths (A*-C)			% L2 Science		
School	FSM	2015	2016	2017	2015	2016	2017	2015	2016	2017
Caerleon	5.2	79.7	75.5	86.2	76.4	81.7	86.6	83.5	86.7	87.0
Bassaleg	6.4	74.7	78.5	82.3	70.4	81.0	79.0	96.8	97.1	86.7
St Joseph's	11.7	82.2	81.4	72.9	76.1	80.5	77.4	90.4	72.6	97.7
St Julian's	19.3	64.9	68.3	58.4	51.0	57.4	58.0	84.5	49.4	69.5
Newport High	20.5	56.0	58.9	51.9	52.2	50.0	49.7	63.6	44.3	67.4
The John Frost School	27.3	54.0	60.6	51.2	48.1	56.4	61.1	67.4	85.6	94.4
Llswerry High	31.3	60.0	71.8	59.2	44.5	55.4	56.2	89.0	89.3	39.2
Llanwern High	33.3	68.1	61.3	29.7	49.1	47.4	38.4	95.7	23.4	38.4
Newport	18.6	67.7	68.5	62.9	59.6	63.7	64.3	83.0	68.7	74.2
Wales	17.8	68.6	69.3	63.7	64.4	66.9	62.5	84.0	82.4	75.6



## Free School Meal Benchmark Summary

When FSM benchmark data is used to compare the performance of similar schools, the number of Newport schools above the median since 2015 has increased for the Level 2 inclusive threshold and maths. The number of schools in the bottom quarter has increased for L2 inclusive.



Individual school benchmark performance is presented in Appendix A.

## Welsh Government Modelled Expectation

The gap between the LA benchmarks for performance modelled on FSM entitlement and actual performance narrowed in 2017, with the Level 2 threshold including English/Welsh and mathematics now 1.3pp above the expected achievement compared to 1pp below in 2016. For capped point score (now capped point 9), Newport narrowed the gap to 2.5 percentage points below the expected achievement.

		2013	2014	2015	2016	2017
Level 2 threshold including English/Welsh and maths	Actual	52	53.2	54.9	58.9	57.0
	Target	51	53.6	56.2	59.9	55.7
	Difference	1	-0.4	-1.3	-1.0	1.3
Capped Average Wider Point Score 2011-13 Capped point 2014-16 Capped 9 2017	Actual	339	342.0	342.9	336.2	353.1
	Target	336	345.4	348.8	351.2	355.6
	Difference	3	-3.4	-5.9	-15.0	-2.5

## LA – Key Stage 5 (Newport LA Schools only)

### Performance Data

**Note: Welsh Government are considering new performance measures for future years, which have yet to be decided**

Percentage of students achieving the level 3 threshold (a volume of qualifications at Level 3 equivalent to the volume of 2 A levels at grades A*-E)				
	2016	2017 Results Day	2017 Final SSSPs	Difference from 2016
Newport	97.7	96.5	96.5	-1.2 ▼
South East Wales	97.9	97.2	96.4	-1.5 ▼
<b>Wales</b>	<b>98.0</b>		<b>97.1</b>	-0.9 ▼

*Cohort size 2016 = 859, Cohort size 2017 = 727*

- When vocational qualifications are taken into account and the Welsh Government's main indicator of post-16 performance, the Level 3 threshold, is considered, performance decreased slightly from 97.7% to 96.5%.
- This 1.2pp decrease is narrower than the 1.5pp decrease across the EAS region, and marginally larger than the 0.9pp decrease across Wales.

## Appendix A – Key Stage 4, School Benchmark Quarter Performance

Subject, AOL or Key Indicator	School Name	2014/15		2015/16		2016/17	
		% Pupils Achieving	Quarter	% Pupils Achieving	Quarter	% Pupils Achieving	Quarter
Level 2 threshold including English/Welsh and Maths	Bassaleg School	65.6	3	73.1	2	73.0	2
	Caerleon Comprehensive School	67.9	3	68.5	3	81.3	1
	The John Frost School	41.2	3	52.1	2	48.1	2
	Llanwern High School	45.7	1	44.5	3	26.1	4
	Lliswerry High School	41.3	2	53.7	1	44.6	1
	Newport High School	43.5	4	44.8	4	40.1	4
	St Joseph'S R.C. High School	73.0	1	73.0	1	68.3	1
	St Julian'S School	46.6	4	51.0	3	48.6	4
Level 2 threshold	Bassaleg School	92.1	2	93.0	2	83.1	2
	Caerleon Comprehensive School	81.9	4	83.8	3	85.8	2
	The John Frost School	80.7	2	79.3	3	59.9	2
	Llanwern High School	81.9	2	69.3	3	37.0	3
	Lliswerry High School	84.5	2	77.4	3	54.6	2
	Newport High School	83.7	2	67.2	4	54.5	4
	St Joseph'S R.C. High School	92.6	2	81.0	4	81.0	1
	St Julian'S School	78.5	3	59.4	4	56.4	4
Level 1 threshold	Bassaleg School	98.8	3	99.2	3	96.4	4
	Caerleon Comprehensive School	98.3	3	97.9	4	99.6	2
	The John Frost School	95.7	2	96.3	3	92.6	4
	Llanwern High School	93.1	3	85.4	4	89.9	3
	Lliswerry High School	91.0	3	94.9	3	91.5	3
	Newport High School	93.5	4	95.3	4	94.7	3
	St Joseph'S R.C. High School	100.0	1	98.7	3	99.5	2
	St Julian'S School	90.4	4	96.4	4	91.8	4
Capped Points Score (Capped Points 9 Score from 2016/17)	Bassaleg School	377.2	1	371.7	2	397.3	2
	Caerleon Comprehensive School	361.5	3	364.3	3	401.9	1
	The John Frost School	328.0	2	330.6	3	333.7	3
	Llanwern High School	317.6	3	288.4	4	298.4	3
	Lliswerry High School	331.4	2	342.3	2	315.1	2
	Newport High School	325.2	4	318.6	4	314.6	4
	St Joseph'S R.C. High School	362.6	2	352.5	4	386.7	1
	St Julian'S School	315.4	4	298.2	4	321.8	4
English	Bassaleg School	74.7	4	78.5	3	82.3	2
	Caerleon Comprehensive School	79.7	2	75.5	4	86.2	1
	The John Frost School	54.0	2	60.6	2	51.2	3
	Llanwern High School	68.1	1	61.3	2	29.7	4
	Lliswerry High School	60.0	2	71.8	1	59.2	1
	Newport High School	56.0	4	58.9	3	51.9	3
	St Joseph'S R.C. High School	82.2	1	81.4	1	72.9	2
	St Julian'S School	64.9	2	68.3	2	58.4	3
Mathematics (Combined Mathematics from 2016/17)	Bassaleg School	70.4	3	81.0	2	79.0	2
	Caerleon Comprehensive School	76.4	2	81.7	2	86.6	1
	The John Frost School	48.1	2	56.4	2	61.1	1
	Llanwern High School	49.1	2	47.4	4	38.4	3
	Lliswerry High School	44.5	3	55.4	2	56.2	1
	Newport High School	52.2	4	50.0	4	49.7	4
	St Joseph'S R.C. High School	76.1	1	80.5	1	77.4	1
	St Julian'S School	51.0	4	57.4	3	58.0	3
Science	Bassaleg School	96.8	1	97.1	1	86.7	3
	Caerleon Comprehensive School	83.5	3	85.6	2	87.0	3
	The John Frost School	67.4	3	85.6	2	94.4	1
	Llanwern High School	95.7	1	23.4	4	38.4	4
	Lliswerry High School	89.0	2	89.3	1	39.2	3
	Newport High School	63.6	4	44.3	4	67.4	3
	St Joseph'S R.C. High School	90.4	3	72.6	4	97.7	1
	St Julian'S School	84.5	3	49.4	4	69.5	3

## Proposal

1. To acknowledge the position regarding pupil performance and progress made.
2. To consider any issues arising that the Cabinet may wish to raise.

## Well-being of Future Generations (Wales) Act 2015:

All local authorities have a duty to strive to develop a “Prosperous Wales” by developing “skilled and well-educated population in an economy which generates wealth and provides employment opportunities.” Furthermore, regardless of the socio-economic demographic of an individual school community, all schools will be challenged and supported to improve pupil attainment with a view to create “more equal wales” that enables pupils to fulfil their potential no matter what their background or circumstances.

**Financial Summary:** There are no financial implications linked to this report

## Risks

Risk	Impact of Risk if it occurs* (H/M/L)	Probability of risk occurring (H/M/L)	What is the Council doing or what has it done to avoid the risk or reduce its effect	Who is responsible for dealing with the risk?
Individual schools do not meet their agreed future target.	M	M	There is an expectation that effective pupil tracking and monitoring is carried out in all schools across the LA.  Progress towards agreed targets are collated by the EAS and LA three times per year. Schools identifying that they are not on track will receive support and challenge from the EAS / LA in order to reduce the gap between agreed targets and outcomes	Deputy and Chief Education Officer EAS
The LA does not meet Welsh Government Modelled Expectations for Key Stage 4 outcomes for 2017/18	M	H	Work plans are in place to improve Key Stage 4 outcomes.	Deputy and Chief Education Officer EAS

## Links to Council Policies and Priorities

Council Improvement Plan  
 Education Service Plan  
 21st Century Schools Strategy  
 Welsh-medium Education Strategy  
 Wellbeing of Future Generations (Wales) Act 2015

**Options Considered / Available; Preferred Choice and Reasons:** N/A

## **Comments of Monitoring Officer**

There are no legal issues arising from the Report.

## **Comments of Chief Financial Officer**

There are no financial implications arising from this report

## **Staffing Implications: Comments of the Head of People and Business Change**

How well children do at school is of critical importance both to individuals, communities and the city. This importance is recognised within the Corporate Plan through the Aspirational People goal. There are many factors that influence both the attainment and achievement of children during their educational career and which can contribute to the overall performance of schools and the Local Authority. The relatively good performance of Newport schools and the on-going reduction in the number of pupils not supported into an outcome post compulsory education are clearly showing a move in the right direction and a commitment to achieving the aspirations of the Well-being of Future Generations Act (2015).

The report does not highlight any specific human resource implications.

## **Cabinet Member for Education & Skills:**

As Cabinet Member for Education , I am very pleased that Newport has shown such strong improvement in key indicators such as the Level 2 Inclusive and Level 2 Maths (A\*-C). This is the first time that Newport has achieved above the all Wales average performance in these measures. I am also delighted that so many of our young people achieved the Level 3 Threshold in their school sixth forms. This has allowed another cohort of young adults in Newport to attend university and begin their careers in the world of work. While there is much to celebrate in this report, clearly there is too much variance between schools and this needs to reduce in order to secure pupil outcomes this summer. I will continue to challenge and support schools and its partners to ensure this happens.

**10<sup>th</sup> January 2018**